



InteWall[®]

INTELLIGENT DRYLINING

A pre-panelised internal partition solution that increases efficiencies and reduces waste on-site.

CONTENTS

- 01 About Saint-Gobain
- 02 Introduction to InteWall
- 03 Designing for InteWall
- 04 Off-Site Assembly of InteWall
- 05 On-Site Installation of InteWall
- 06 Case Study of InteWall
- 07 The InteWall Process



SAINT-GOBAIN IS PRESENT IN 76 COUNTRIES, WITH SUSTAINED DEVELOPMENT IN EMERGING COUNTRIES. THE GROUP OFFERS ITS EXPERTISE THROUGH ITS LEADING BRANDS, ITS RESEARCH CENTRES, ITS DISTRIBUTION BRANDS AND IS A LEADER IN LIGHTWEIGHT & SUSTAINABLE SOLUTIONS.



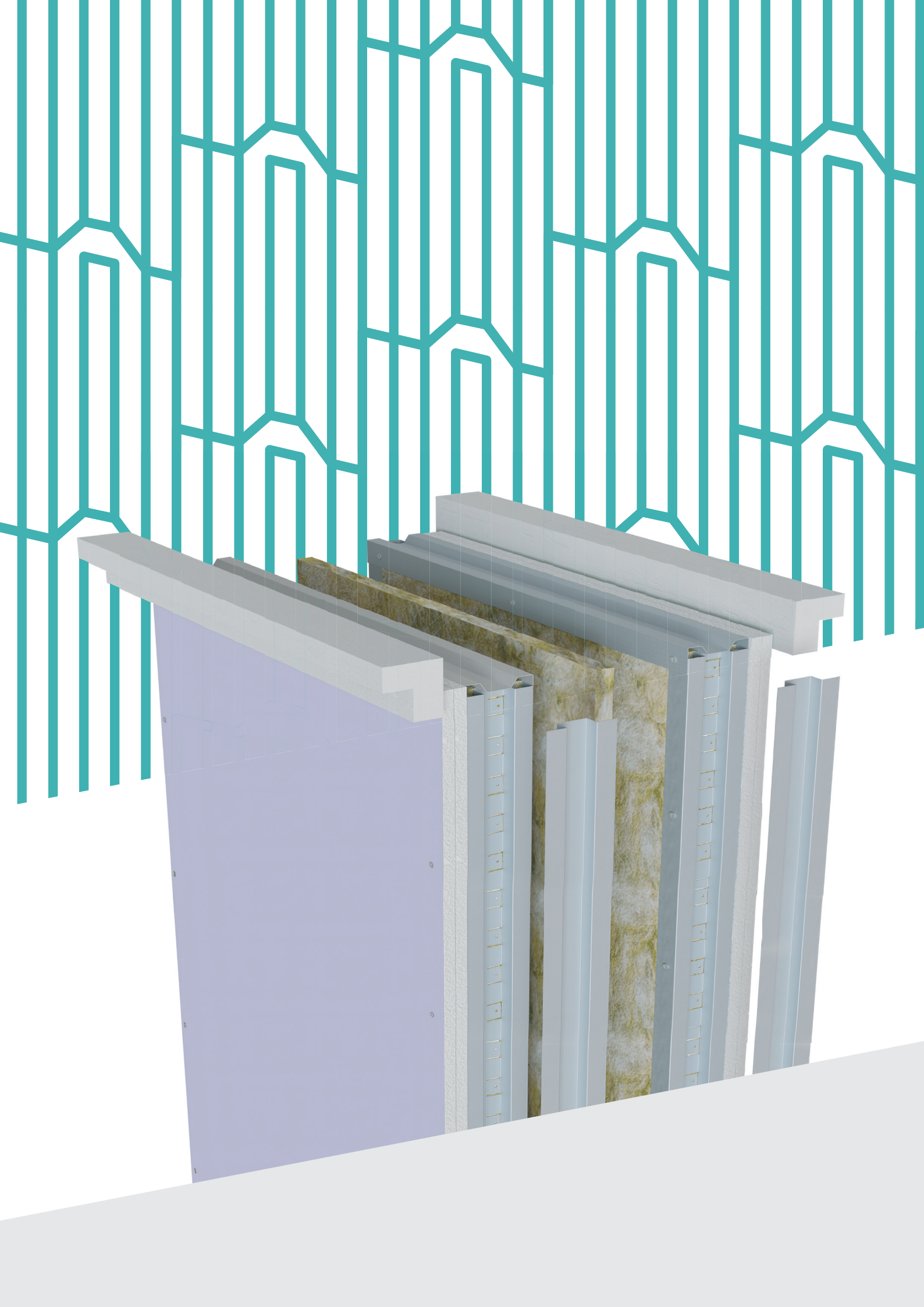
**MANUFACTURING
FOR CONSTRUCTION**



OFF-SITE SOLUTIONS



INTERIOR SOLUTIONS



SAINT-GOBAIN SOLUTIONS

SAINT-GOBAIN SOLUTIONS IN IRELAND, IS HERE TO BRING INNOVATION AND TAILORED SOLUTIONS TO MEET THE UNIQUE NEEDS OF YOUR CONSTRUCTION PROJECTS.

CHALLENGES



SKILLS SHORTAGES



INCREASING COSTS



CLIMATE NEEDS



SUSTAINABILITY

Sustainability and the de-carbonisation of buildings. Transparent evidence and data to deliver solutions that help them meet scope 3 reduction targets.



CHANGING DEMOGRAPHICS

Changing workforce demographics - Ageing workforce and labour shortages. Innovative solutions that increase productivity and quality improvement.



FUTURE PROOFING

Future requirements in Building Design and Design for Well-being. Innovative solutions that meet the current and future performance needs of specific buildings.

DEVELOPING SOLUTIONS TO MEET CUSTOMER NEEDS



SOLUTION OWNERSHIP

Own interfaces between systems and trades - fire safe and thermally efficient buildings.



EVIDENCE BASED

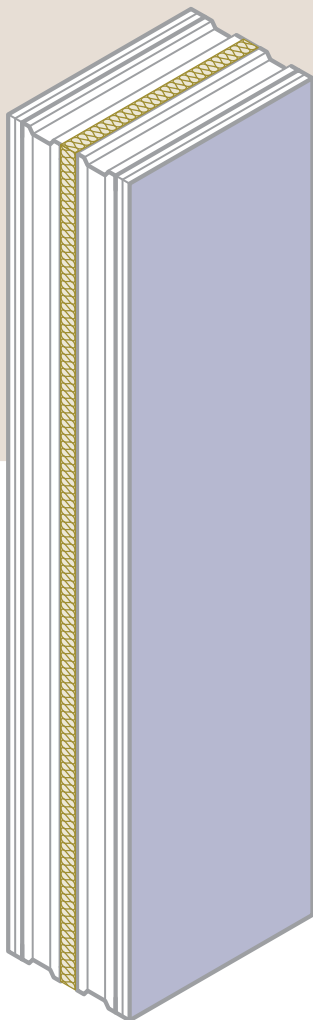
Increasing need for confidence and certainty backed up by evidence as Regulatory framework is tightening. Ability to supply guidance, evidence and on-site support - that replicate real world.



DIGITAL CONSTRUCTION

Development and use of Digital Construction capabilities to support the Golden Thread. Easy access to and provision of technical information and data.

02 Introduction to InteWall



InteWall is a fully substantiated, pre-panelised internal partitions ideal for separating and party walls. This system is designed to increase on-site efficiency and reduce waste.

Based around a digital design ecosystem and assembled under quality controlled off-site conditions, InteWall is an intelligent, internal drylining partition system, particularly suitable for use in high rise residential and multi occupancy buildings.

InteWall is quick and simple to install, bringing certainty of system performance and site productivity and significantly reducing waste.



STRAIGHTFORWARD TO INSTALL

By taking the complexity of design away from site and into a managed factory setting, InteWall increases efficiencies for contractors and is a quick-to-install solution.

Supported on-site by simple design layouts, this ensures efficiency of site installation, reducing time and resource to complete the internal partitions.



WASTE REDUCTION

As a pre-formed panel, on-site waste is minimised, saving Contractors and Installers in terms of disruptive waste removal from site.

InteWall panels are manufactured in a specialist off-site facility with made-to-measure components.

Off-cuts and wastage are optimised through design and managed internally to help drive circularity and recycling.



CERTAINTY FROM DESIGN TO INSTALL

The design of the panel concept includes allowance and accommodation for deflection movement and naturally adapts to building movement at both head and base.

InteWall dedicated digital planning tools, with full BIM integration capability, will support project scheduling and evidential needs, helping to drive certainty of both system performance and site productivity.

InteWall is fully substantiated to EN standards for fire, acoustic and duty.



TIME SAVING

With pre-assembled panels delivered to coincide with project scheduling, and the removal of many of the traditional installation tasks, The use of InteWall can realise up to 40% on-site efficiency savings.

PARTY WALL

Twin-frame

 120 mins Fire

 64dB Rw

03 Designing for InteWall



PERFORMANCE DESIGN

We take your full layout plans and create a full panel design to match project performance requirements.



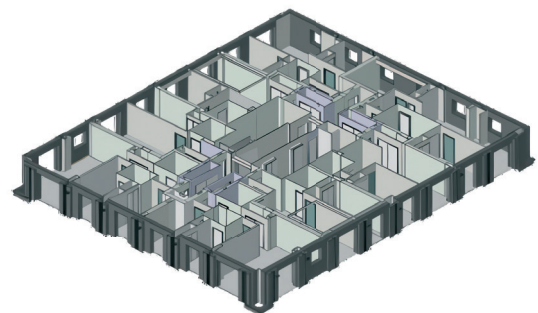
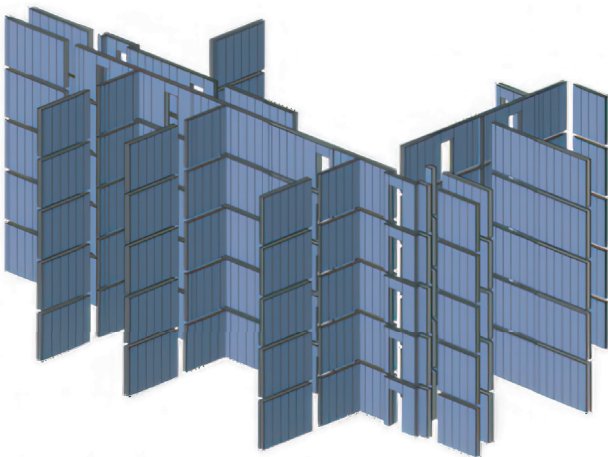
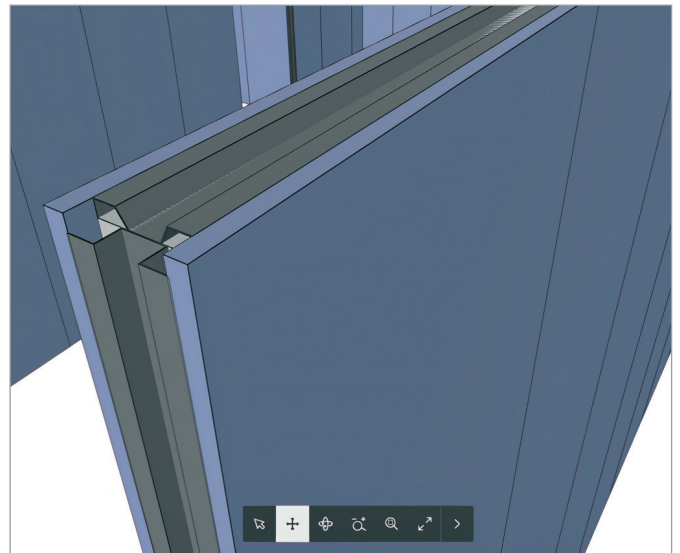
RISK REDUCTION

Complex detailing is part of the design and included within the pack of panels. It also removes the risk of switching out components within tested systems, ensuring compliance to the SpecSure® Warranty.

DESIGNING INTEWALL

BIM INTEGRATION & OPTIMISATION

- » Our intelligent design tools can very quickly create an InteWall layout from a BIM model.
- » Taking a BIM model into our dedicated design tool, we produce a layout that provides a plan for panels, the list of components and schedule over the project period.
- » At this point, we can work with the tool to suggest design modifications to optimise InteWall standardisation and optimise efficiencies.
- » The design process establishes the digital path which is followed throughout a project - from manufacturing requirements to site installation schedules, substantiation records and full traceability.



04 Off-Site Assembly of InteWall



QUALITY CONTROL

Manufactured off-site with rigorous quality control procedures, partition framing and fixings are checked in the factory prior to arrival on site.



LOW WASTE

The InteWall process reduces waste at every stage. As a pre-formed panel, it minimises on-site waste, saving contractors and installers from dealing with disruptive waste removal. Manufactured off-site, InteWall manages off-cuts and waste in a clean environment, promoting circularity and recycling.

OFF-SITE ASSEMBLY

- » When partnering with Saint-Gobain Solutions, the assembly of InteWall system is constructed in an efficient, specialist factory setting.
- » Overall project productivity is enhanced through managed, efficient production processes in a quality-controlled environment.
- » Small amounts of plasterboard and metal waste generated through the assembly process are segregated and recycled.
- » Plasterboard off-cuts are recycled for use within the manufacturing process of future InteWall linings.
- » All InteWall panels undergo rigorous quality control checking before they leave the factory, ensuring that all elements are correctly assembled prior to arrival on site.
- » Once manufactured, InteWall panels are loaded into specially made protective and reusable steel stillages ready for despatch to site.



Has provided up to **90% waste saving compared to traditional drylining.**

05 On-Site Installation of InteWall



STRAIGHTFORWARD TO INSTALL

Manufactured off-site, the panels are delivered to the site in the correct order for installation. Doors and openings are pre-defined in the design stage, allowing installation to proceed quickly. Panels are ready for first fix with all wireways and pattressing pre-installed.



FULLY SUBSTANTIATED TO EN STANDARDS

- » Fire performances tested to EN 1364-1
- » Sound Insulation performances to EN ISO 140-3
- » Duty ratings tested to BS 5234-2

INSTALLING ON-SITE

- » InteWall is a quick to install solution and increases efficiency on site as panel assembly and complex detailing is managed in an off-site factory setting.
- » InteWall can significantly reduce resource required to complete the drylining installation, as well as improve the consistency of efficient performance.
- » Projects completed to date have typically required around 60% of man-hours compared to equivalent traditional drylining installation.*
- » Clear design layouts generated from our digital layout tools help ensure efficiency of site installation, reducing time and resource to complete the internal partitions.
- » As a pre-formed panel, on-site waste is minimised, saving Contractors and Installers in terms of disruptive waste removal from site.
- » Projects completed to date have provided over 90% waste saving versus traditional drylining.*

*Case study references - Wembley Park, John Sisk & Sons, Platt & Reilly Ltd

Has provided up to **60% labour savings compared to traditional drylining.**



FLOOR AND WALL GUIDES



STEEL HEAD ANGLE



GLASROC HEAD ANGLE



PARTY-WALL SYSTEM INSTALLATION





CASE STUDY WEMBLEY PARK

MAIN CONTRACTOR
JOHN SISK & SONS LTD

SPECIALIST SUBCONTRACTOR
PLATT & REILLY LTD

PROJECT OVERVIEW
HIGH RISE RESIDENTIAL PROJECT
BASED IN WEMBLEY, LONDON.

The installation on-site was completed in around **60% of the time and resource required for a comparative traditional installation**

In terms of waste reduction on-site, there was up to **90% waste savings vs. traditional drylining projects.**

THE SIX STEPS TO INTEWALL

PROJECT IDENTIFIED

1

2

INITIAL DESIGN

**DESIGN OPTIMISATION
AND AGREEMENT**

3

4

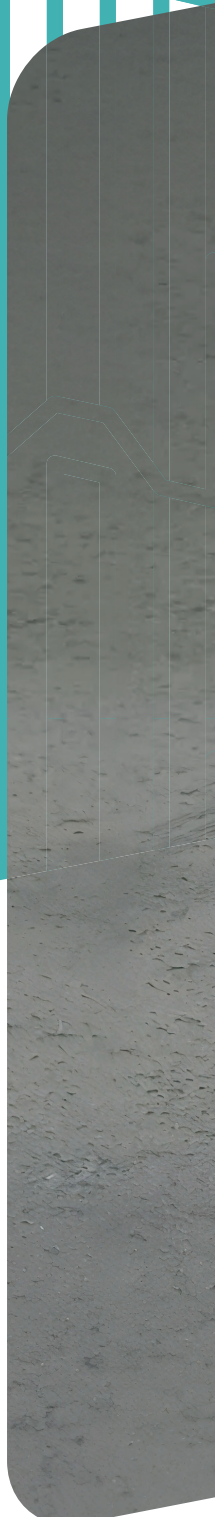
**MANUFACTURE
SCHEDULE**

ASSEMBLY OFF-SITE

5

6

INSTALL



SAINT-GOBAIN SOLUTIONS
Unit 4, Kilcarbery Business Park,
Nangor Road, Dublin 22
D22 R2Y7
Telephone: 01 629 8400
Email: SGSolutionsIrl@saint-gobain.com

February 2025